



International Foundation
for Integrated Care

Sláintecare: Delivering the promise of person-centred integrated care in Ireland

Health Summit 8 February 2022

Dr Niamh Lennox-Chhugani, Chief Executive, IFIC

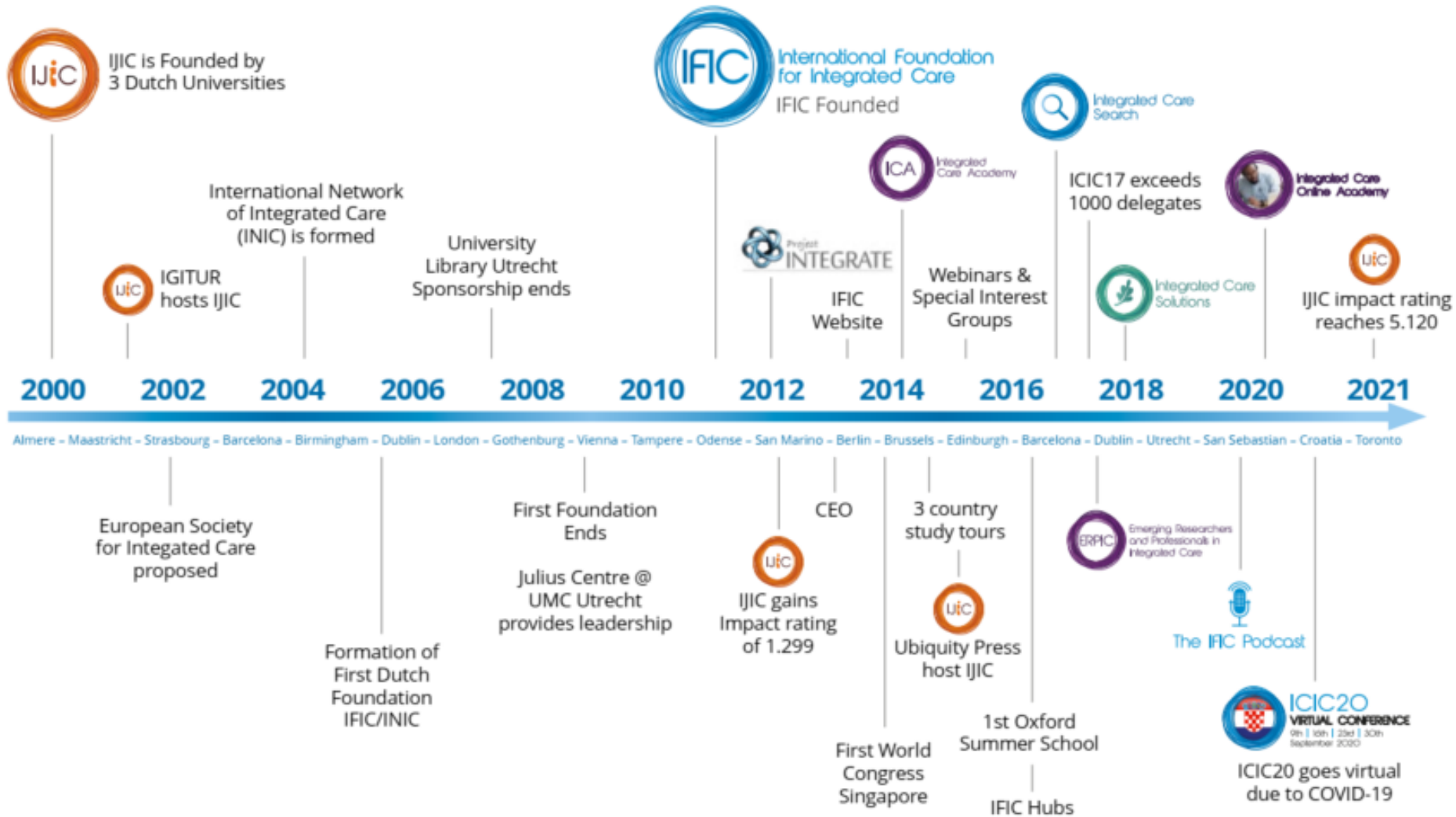


www.integratedcarefoundation.org



@IFICinfo

IFIC'S JOURNEY SO FAR





IFIC IS **NOT**
AN EXCLUSIVE MEMBER
ORGANISATION



IFIC IS
AN INCLUSIVE MOVEMENT
FOR CHANGE THAT SHARES
A COMMON PURPOSE

IFICs vision is for a world where everybody experiences joined-up, easy to navigate care that addresses the outcomes that matter to them in their life and the communities in which they live.



Our mission is to inspire, influence and facilitate the adoption of community-centered integrated care in policy and practice around the world that is inclusive.

IFIC does not operate alone but in **collaboration** with partners internationally, nationally, and regionally.



WHAT DO WE MEAN BY INTEGRATED CARE?

At the Foundation, we take a broad view of what is meant by integrated care. It means different things to different people in different contexts. We have seen the term adopted globally over the last decade alongside such terms as person-centred care, population health management, case management, care co-ordination, chronic care and long term condition management to name but a few...



INTEGRATED CARE HAS OFTEN BEEN DEFINED CONCEPTUALLY BY THE PROBLEMS IT AIMS TO SOLVE:

Fragmentation of services, health, care and support systems not designed for the needs of a population living longer with multiple chronic conditions.

And **under-resourced primary care** that is **narrow in scope and medically-driven**.



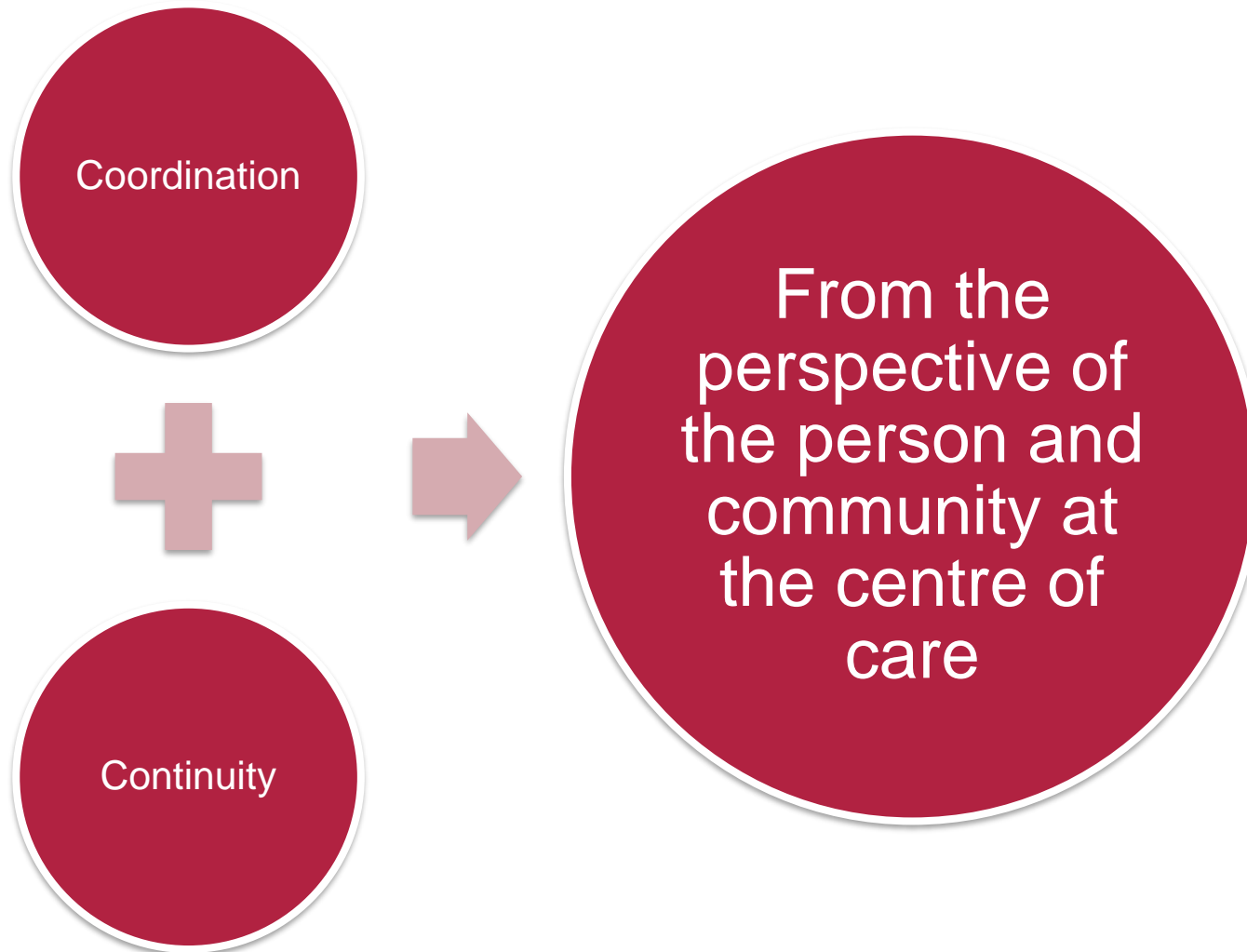
IFIC SEES A CONTINUUM OF DEFINITIONS OF INTEGRATED CARE

This **continuum** at one end has a narrow definition which includes initiatives seeking to improve outcomes of care by overcoming issues of fragmentation through linkage or co-ordination of services of providers along the continuum of care with a health system (European Union's Expert Group on Health Systems Performance Assessment, 2017).

At the other end of the **continuum** there is a broad definition of integrated care that addresses fragmentation beyond the boundaries of the formal health and care system, understanding wellbeing in terms of quality of life and referring to people's capacity to live a good, meaningful, creative and fulfilling lives.

IFIC recognises that systems need to adopt a definition at a point in time that meets the needs of their community and recognises the wider context in which they sit and that this will change over time. The guiding principles of integrated care remain the same – person and community centred, coordinated and with continuity.

Core features of integrated care



IFIC's 9 pillars of integrated care – an evaluation framework



Reflecting on 20 years of evidence on integrated care



Lessons learnt from:

- Italy
- England
- Scotland
- USA
- Switzerland
- Canada
- The Netherlands
- France
- New Zealand
- China
- Central and Eastern European countries (Belarus, Czech Republic, Hungary, Lithuania, Poland, Romania, Russia, Slovakia, Ukraine)

Reflecting on 20 years of evidence on integrated care

Lesson 1

- The impact of integrated care is diffuse

Lesson 2

- It takes years to see effects

Lesson 3

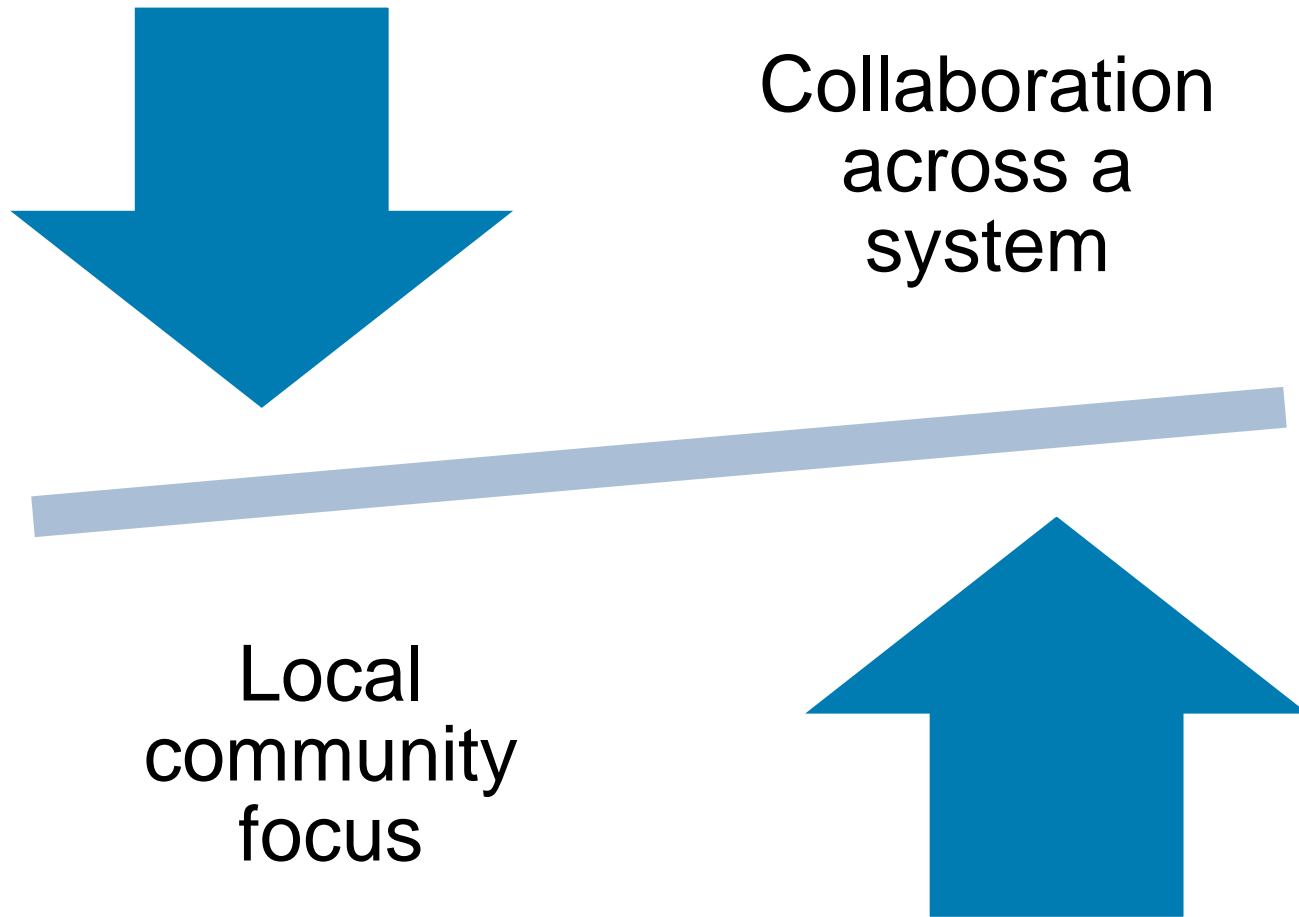
- Approaches are diverse and context specific

The pre-eminence of purpose



"....a set of services which ensure that for each cohort of the population, the right care is delivered by the right person in the right place at the right time. It aspires to a new model of care which sees the citizen, rather than institutions, at the centre of service delivery."

Integrated care systems seek to balance....



How systems address this balancing (based on Minkman 2020)

Population
size

Specialist
knowledge

'Reasonable
responsible
entity'

Local
reasoning

The principle
of
subsidiarity

Minkman MMN. Suitable Scales; Rethinking Scale for Innovative Integrated Care Governance. Int J Integr Care. 2020 Jan 8;20(1):1. doi: 10.5334/ijic.5468. PMID: 31933548; PMCID: PMC6952857.

Sláintecare

**Delivering the promise of
universal person-centred
care in Ireland**

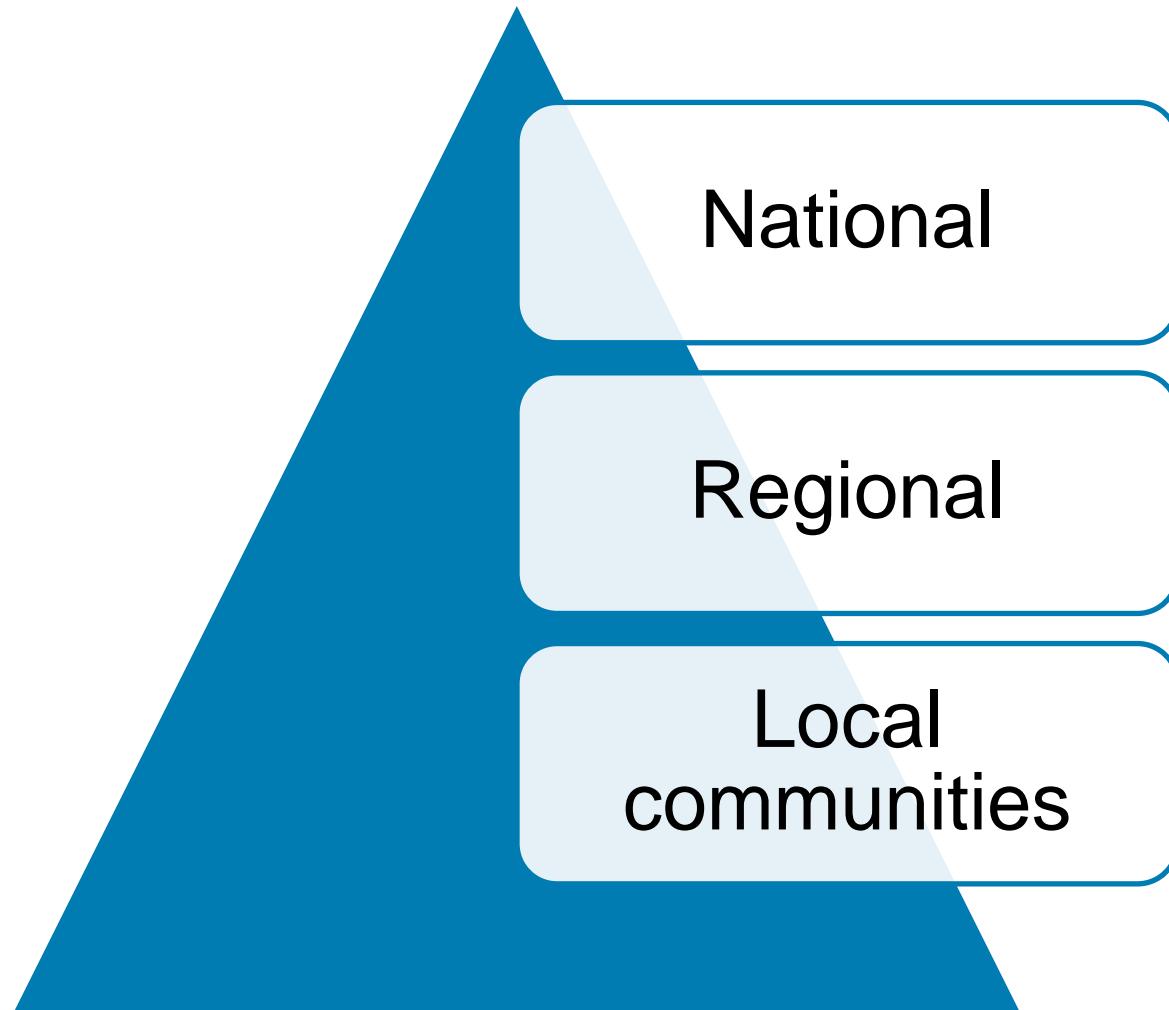
Dr Niamh Lennox-Chhugani
Chief Executive

International Foundation for Integrated Care (IFIC)

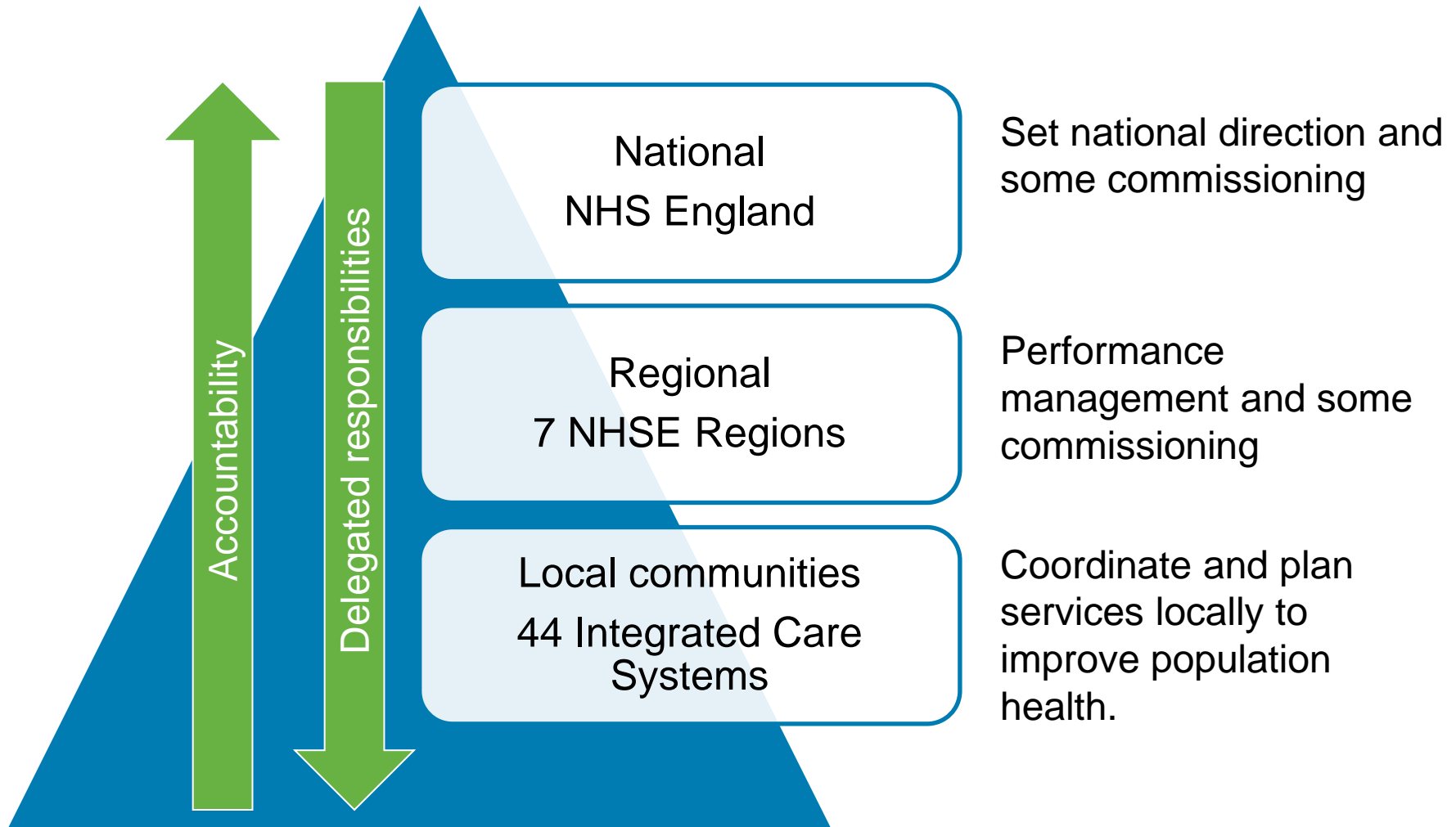


OCTOBER 2021 | **IFIC PUBLICATION**

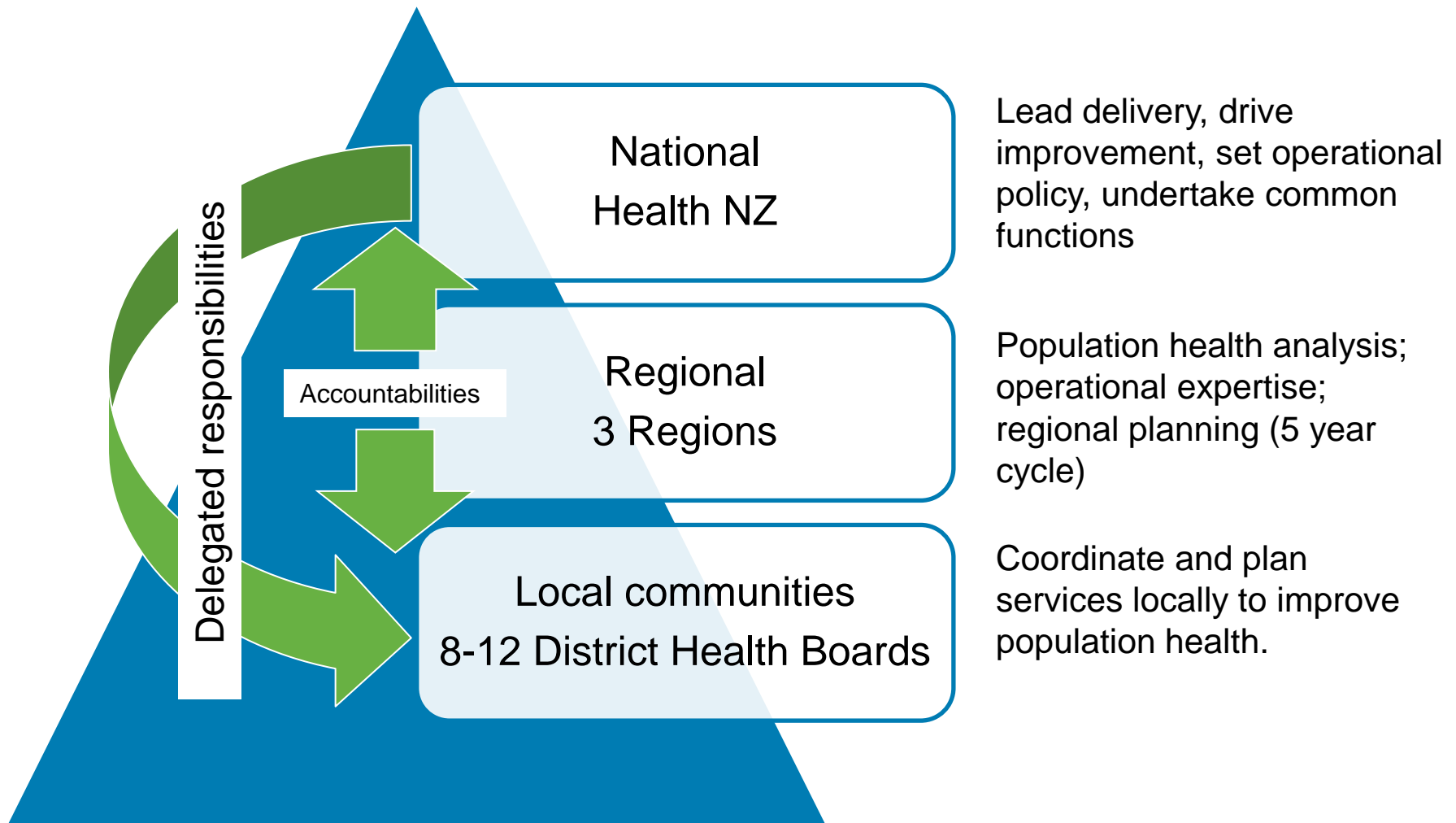
Structures and integrated care



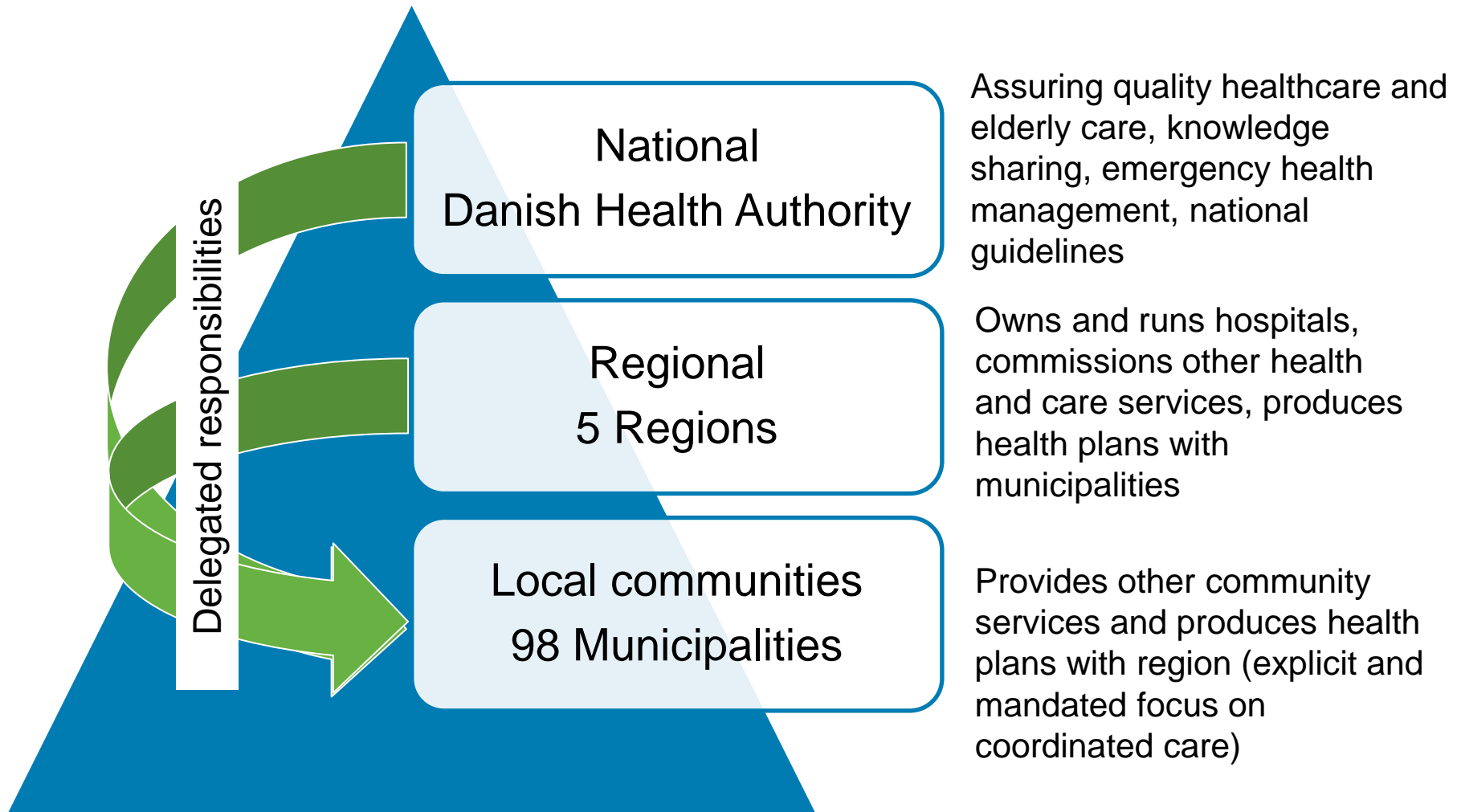
Structures and integrated care: England



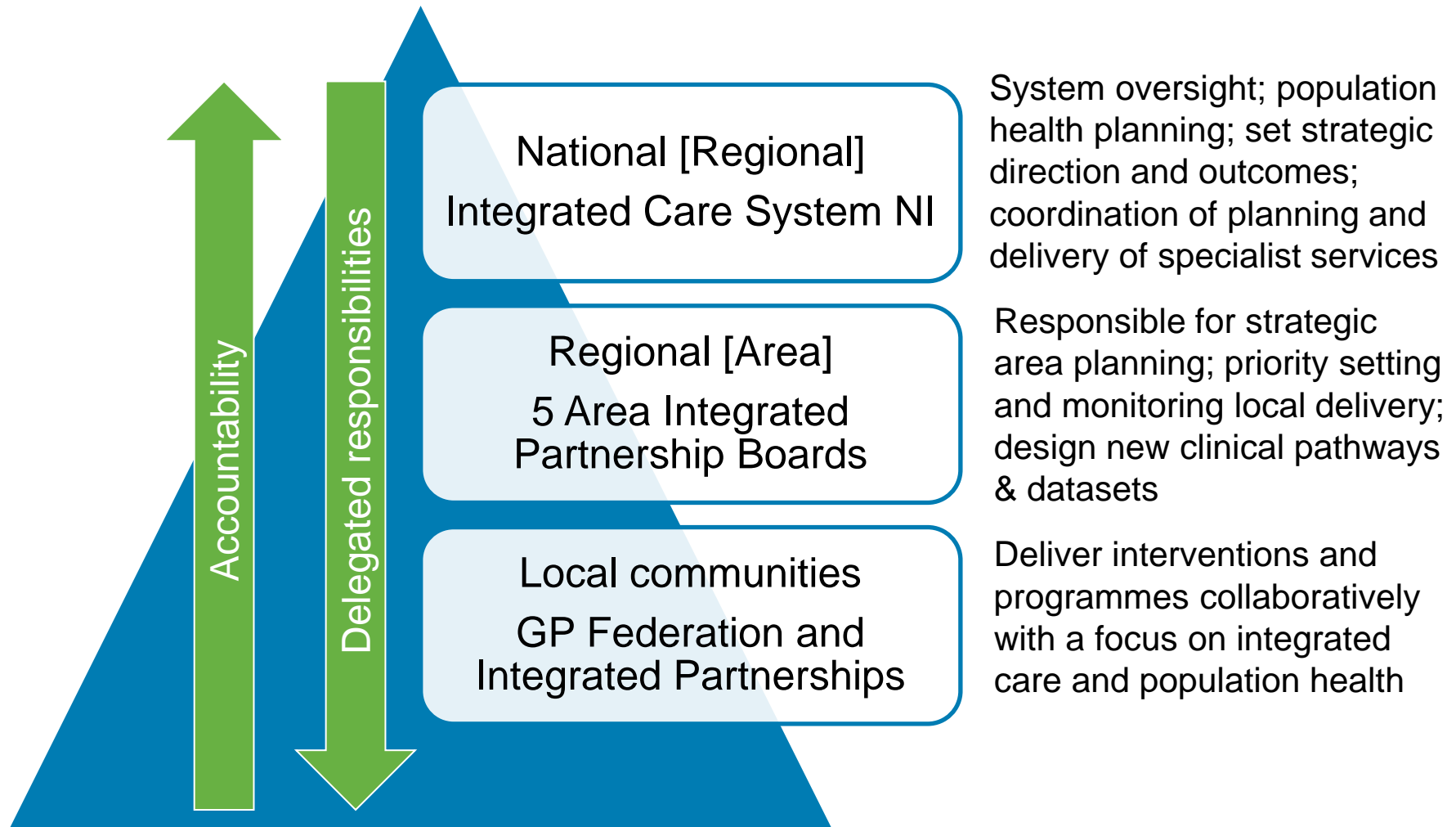
Structures and integrated care: New Zealand



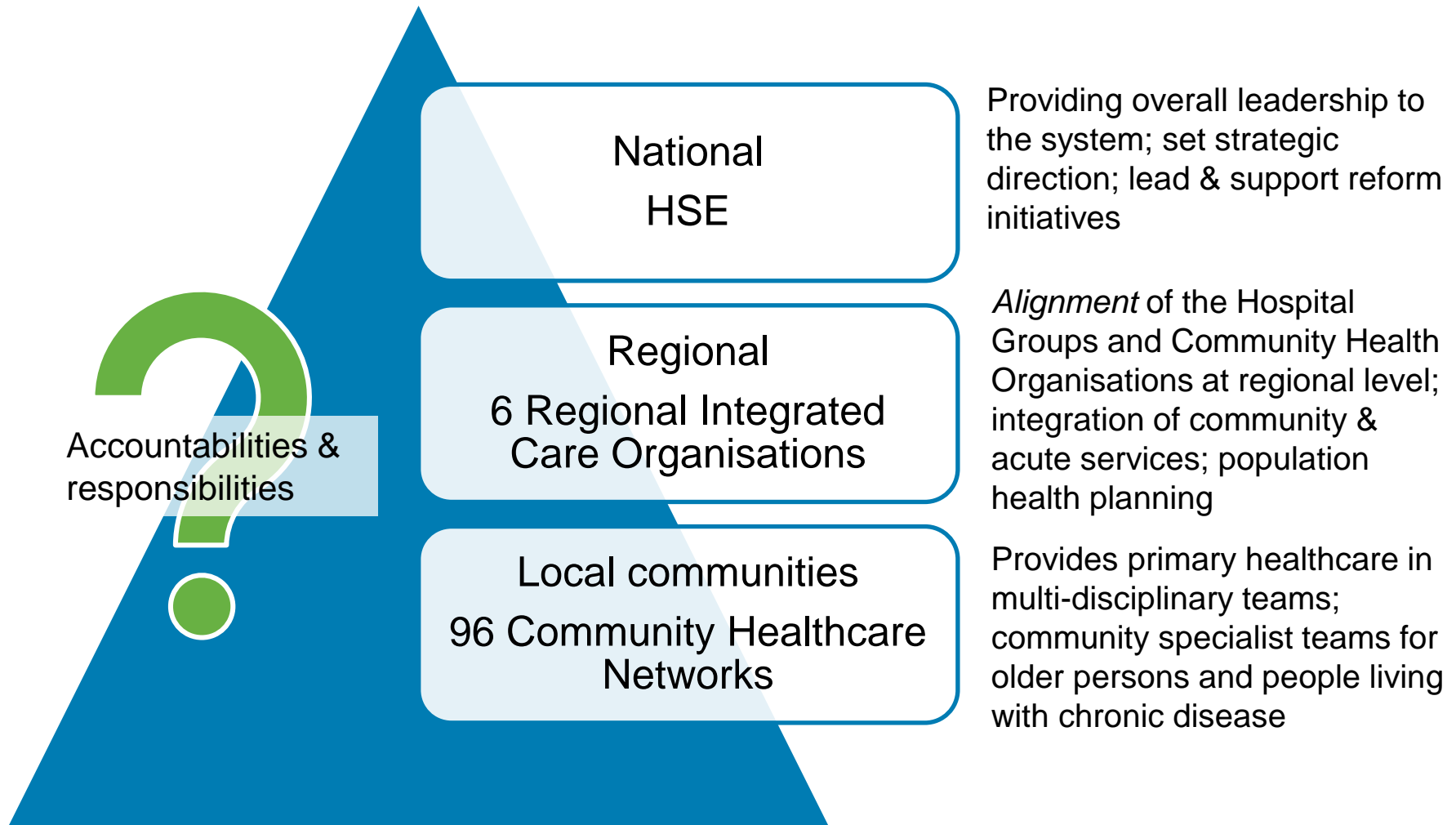
Structures and integrated care: Denmark



Structures and integrated care: Northern Ireland



Structures and integrated care: Sláintecare vision?



A meaningful and impactful role for regional bodies

1 Articulate their **distinct role** in the whole system

2 Build on **existing regional structures**

3 Build **new capabilities**

High impact regional body roles



**Population
health
analytics**



Innovation



**Workforce
planning &
training**

**Expertise in developing new care
models**

Empowering the regions in Denmark allows....

- Focus on regional priorities
- Cross-sectoral alignment
- Collaboration with municipalities

Looking forward for Sláintecare

	Opportunities	Risks
Post-pandemic recovery	<ul style="list-style-type: none">• Build on pandemic experience of digital enablement of new care models• Shift the focus of investment to primary and community services	<ul style="list-style-type: none">• An exhausted workforce• An acute sector that has become the focus of attention
Public Health Reform	<ul style="list-style-type: none">• Use the Expert Group Review to reinvigorate the Healthy Ireland Programme	<ul style="list-style-type: none">• The Expert Group will focus only on the current state and not on the vision that has already been set out as part of the reforms
Community Health Networks	<ul style="list-style-type: none">• Could re-energise a workforce looking to do things differently and better in future	<ul style="list-style-type: none">• Lose momentum as the system goes into 'recovery' mode

A final thought

“Make everything as simple as possible, but not simpler.”

— Gerd Gigerenzer



Join us and contribute to the spread of integrated care



**In March 2022 in Dublin
with IFIC Ireland**

AICIC22 – UCD Dublin Ireland – March

1st All-Ireland Conference on Integrated Care

In May 2022 in Denmark




ICIC22 Odense, Denmark – May 23-25 2022

22nd International Conference on Integrated Care



A movement for change



For more information please go to the
resources on our website at
www.integratedcarefoundation.org
