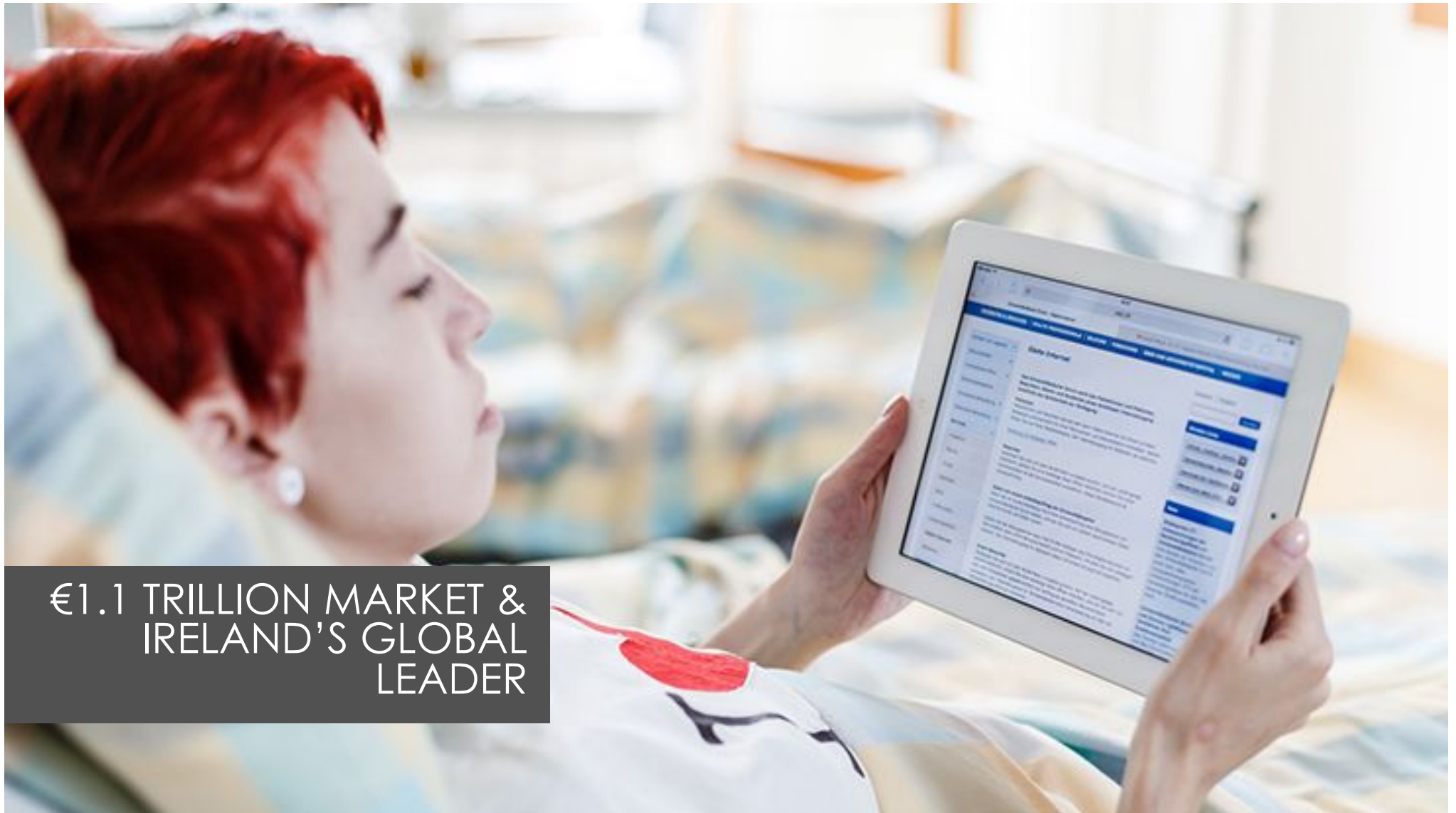


RISE OF THE INTERNET OF THE PATIENT





€1.1 TRILLION MARKET &
IRELAND'S GLOBAL
LEADER

SMART CHIPS & TAGS





A close-up photograph of a person's hand holding a small, white, rectangular medical device. The device has a black Star of Life symbol on its front, which is a common medical emblem. The device is being held between the thumb and index finger. The background is blurred, showing a person's arm and hand.

WEARABLES



THALMAN
HEALTH



TELEMEDICINE

webdoctor.ie
Take the pain out of prescriptions



 **OralEye**
Dental Care Reimagined



VIRTUAL REALITY





clide.hutchinson@hse.ie

eHealth Connect

Establish the initial 'touch point'
for digital companies who wish
to partner with eHealth Ireland
and help deliver the strategic
programmes

