



# Supporting Cancer Services in the Community

**Padraig Duff**

**Commercial Director – TCP Homecare**

TCP Homecare is the **largest** private provider of direct to patient **clinical homecare** services in the healthcare sector in Ireland with over **20 years** of experience.

IV Home Infusion Service for Orphan Drug Products

Immunoglobulin Home Support Programme

Delivering the National IV Antibiotic (OPAT) in the Home Service on behalf of the HSE

- ❖ Returning **40,000 Beds Days** in 2023 to the acute hospital sector

**Delivering circa 72,000 x Patient Home Visits in 2023**

**Providing HSE Community Intervention Services (CIT) across the following regions:**



# Cancer Services In Ireland:

Demand for cancer diagnostics and treatment services continue to grow in line with our growing and aging population.

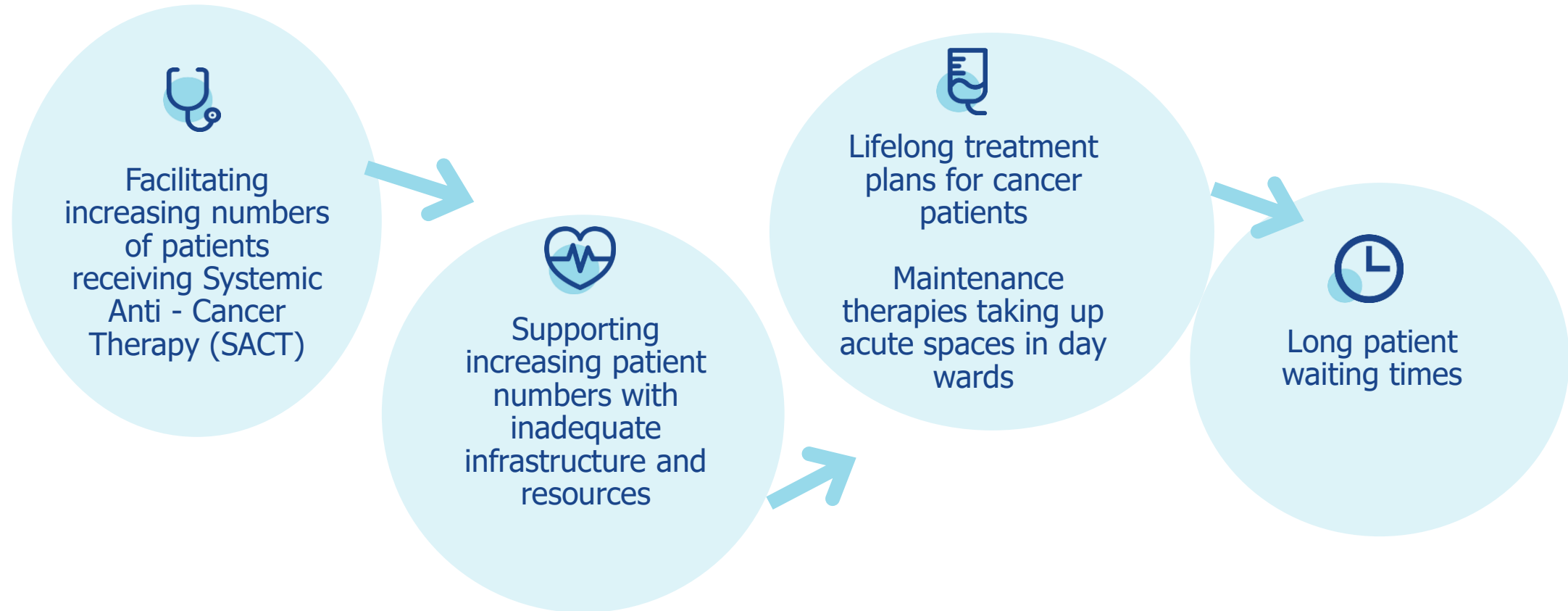
The National Cancer Registry of Ireland (NCRI) estimates that there will be a 97% increase in the incidence of cancer in Ireland between 2010 and 2040

Progress has been made under the National Cancer Strategy 2017-2026:

**However, cancer services continue to struggle to meet demand**



# Challenges hospitals are currently facing



# Why Develop Community Oncology Services



Support hospitals and pharmacy departments who are overburdened with capacity and resourcing challenges through a shared care approach



Collaborative working - Build trusting professional relationships between hospitals and private partners to enhance patient care



Reduce waiting times & improve access for patients to evidence-based, quality, community oncology services



Enhance the care provided to patients & positively impact lives of patients & families

# Our Solution & Expertise

Patient remains under the clinical governance and care of the referring clinician

**Shared care**

Treatment pathways remain consistent with those expected in the hospital setting

In house quality department supporting service set ups, clinical audit, and risk management

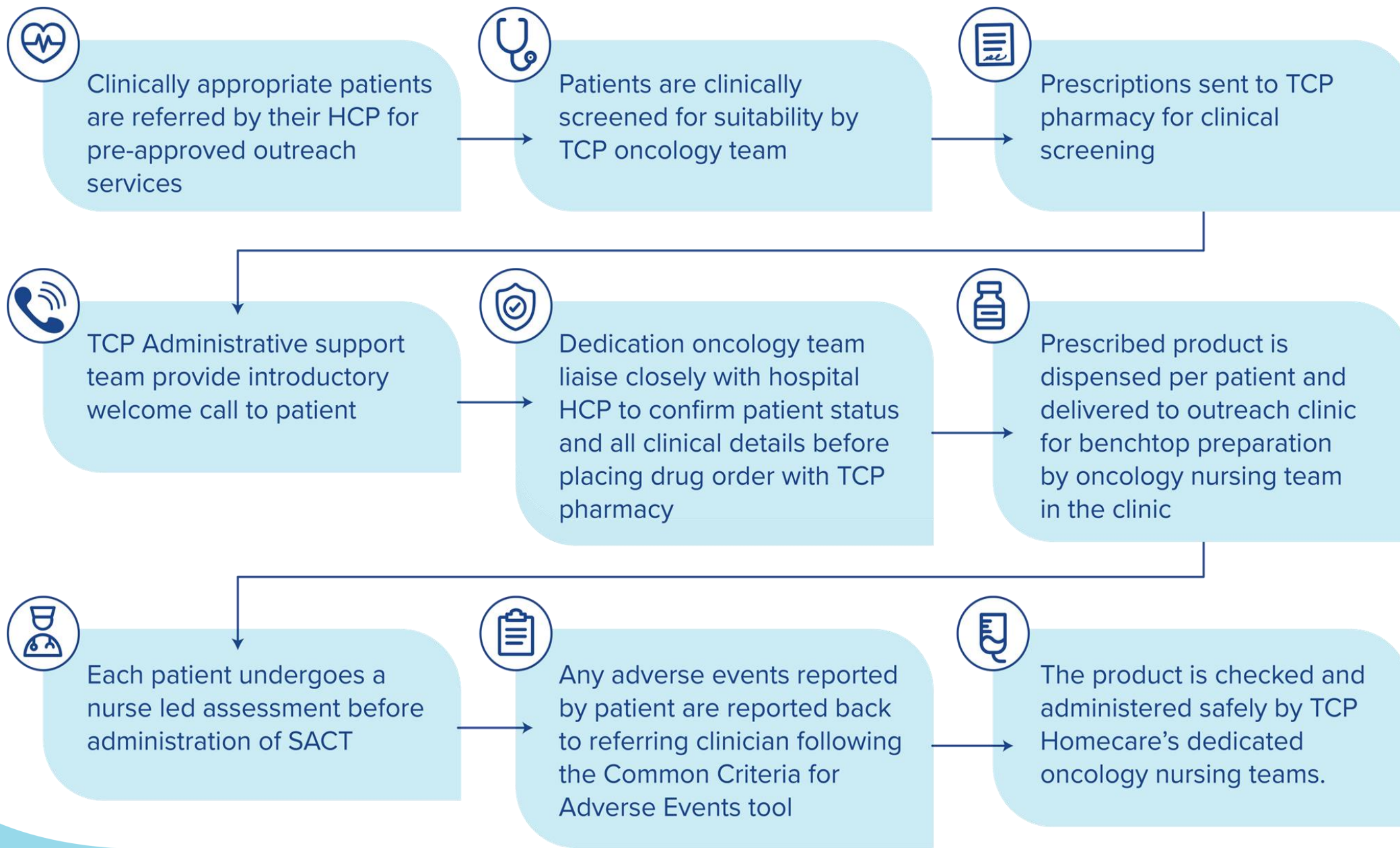
TCP Pharmacy dispensing of non-compounded SACT medicines

Electronic patient management system supporting instant communication of clinical nursing notes back to referring clinicians

Working to approved hospital and NCCP SACT protocols



# Model of Care



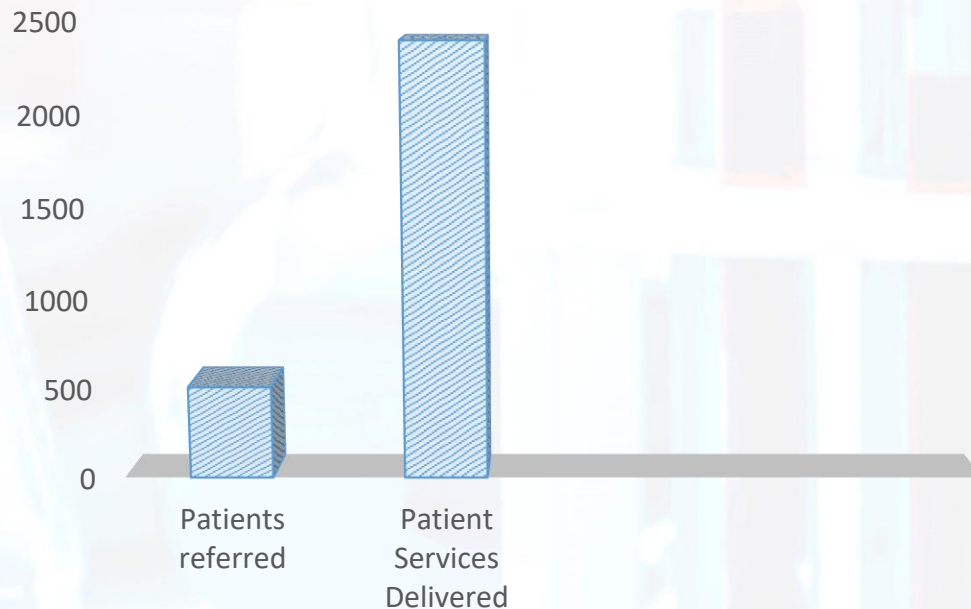
# Our Experience

- ✓ Partnered with NCCP designated cancer centres in the delivery of cancer outreach services
- ✓ Risk assessed and developed protocols for multiple SACT products
- ✓ **Delivered > 2,800 cancer services to patients via our outreach clinics since 2022**
- ✓ Experience working with the national computerised system for oncology patient data and prescribing - The National Cancer Information System (NCIS)
- ✓ TCP pharmacy dispensing and cold chain delivery of non-compounded SACT medicines to outreach clinics



# Community Oncology An example in practice

## Galway Oncology Outreach Services Jan-Nov 2022



The roll out of this service allowed for the return of time and resources to the day oncology services.

One month after commencement of service Galway University Hospital oncology department returned KPIs of **100%** to NCCP

### Service Successes:

- ✓ No patient complaints
- ✓ No HCP complaints
- ✓ No clinical incidences
- ✓ All treatments delivered on time and on schedule
- ✓ Patient experience survey demonstrated 100% patients were satisfied with the outreach clinic service

# Conclusion



Home/community-based oncology treatments and disease management may enhance quality of survival time for patients with a cancer diagnosis



Providing community oncology services helps reduce the burden on healthcare resources while maintaining clinical benefits of treatment

